

How solving challenges in society can lead to new exiting arenas for sport

Developing innovative sports facilities

Development Consultant Jakob Færch
Danish Foundation for Culture and Sports Facilities



LOKALE
ANLÆGS
FONDEN

Mission

The mission of the Foundation is to develop, advise and support construction of sports, culture and leisure facilities with a strong focus on architecture and functionality.



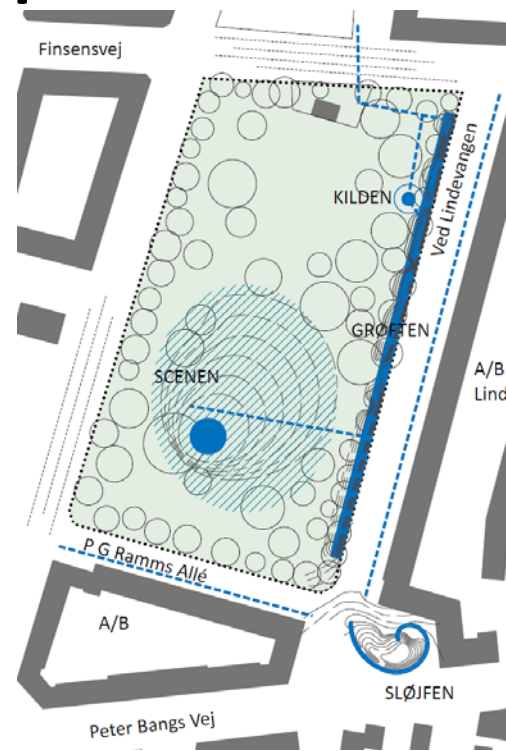
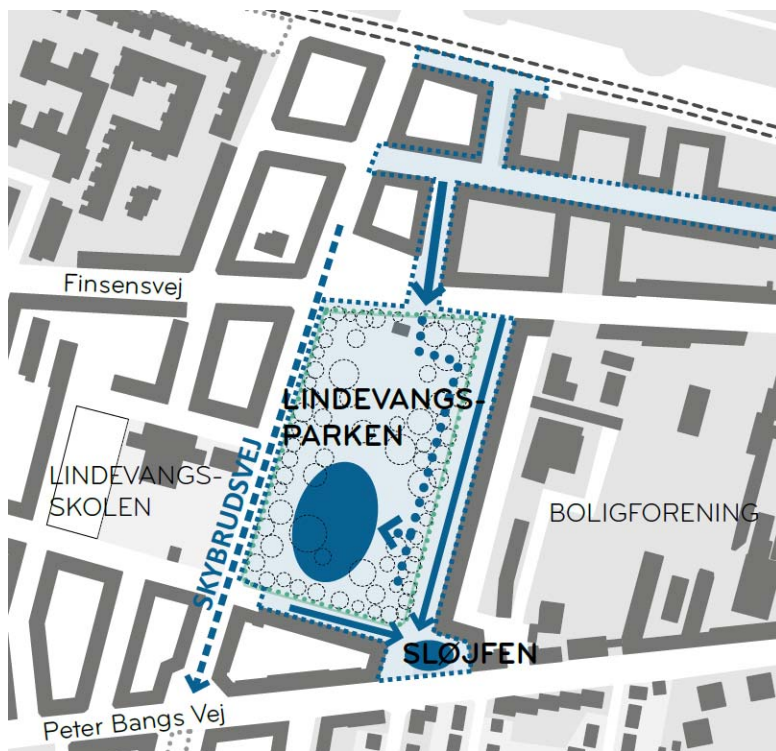
Working with challenges...

- Climate Changes
- Urbanisation
- Energy production
- Clean drinking water

Rain Water



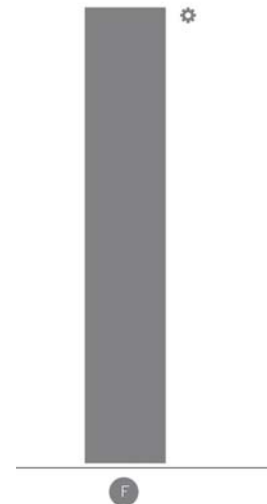
Lindevangsparken



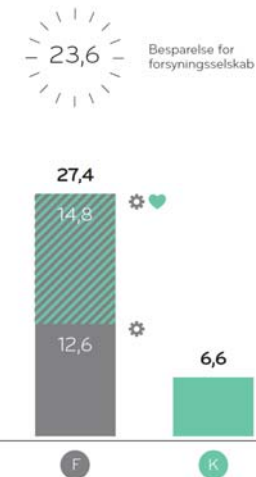
Lindevangsparken



TRADITIONELT PROJEKT
UNDER JORDEN
51 mio. kr.



VANDPLUS-PROJEKT
OVER JORDEN
34 mio. kr.



Lindevangsparken



Photo: Carsten Ingemann



Lindevangsparken



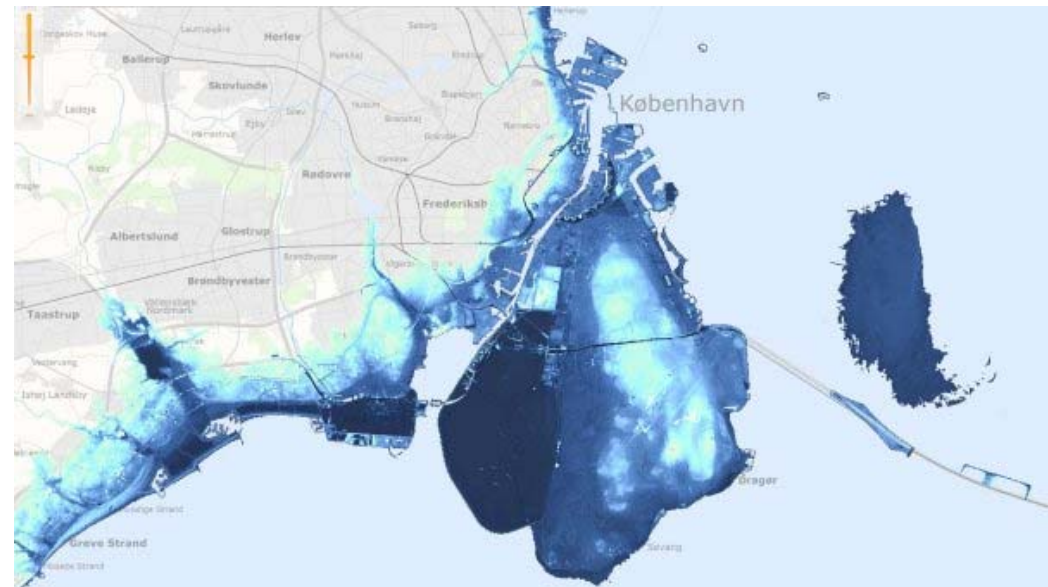
Photo: Carsten Ingemann



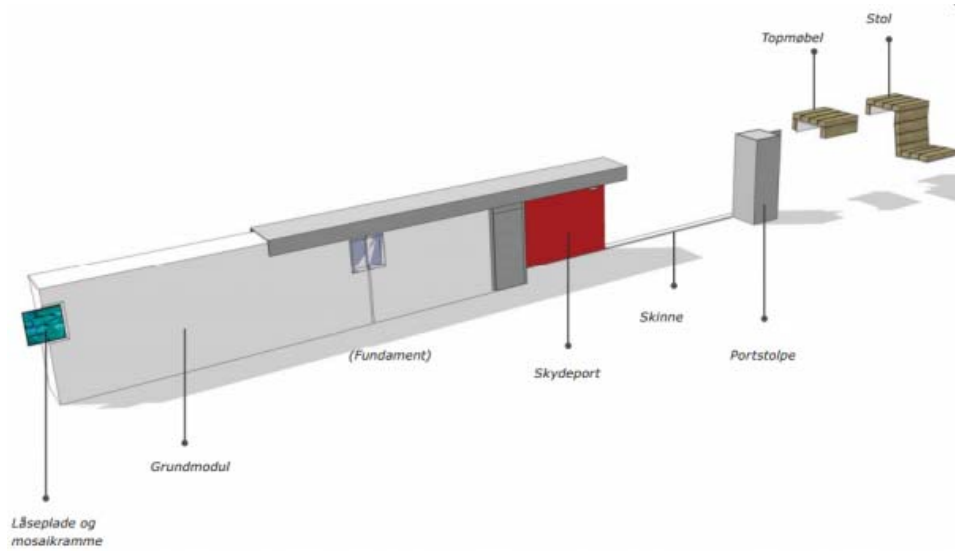
Rabalderparken



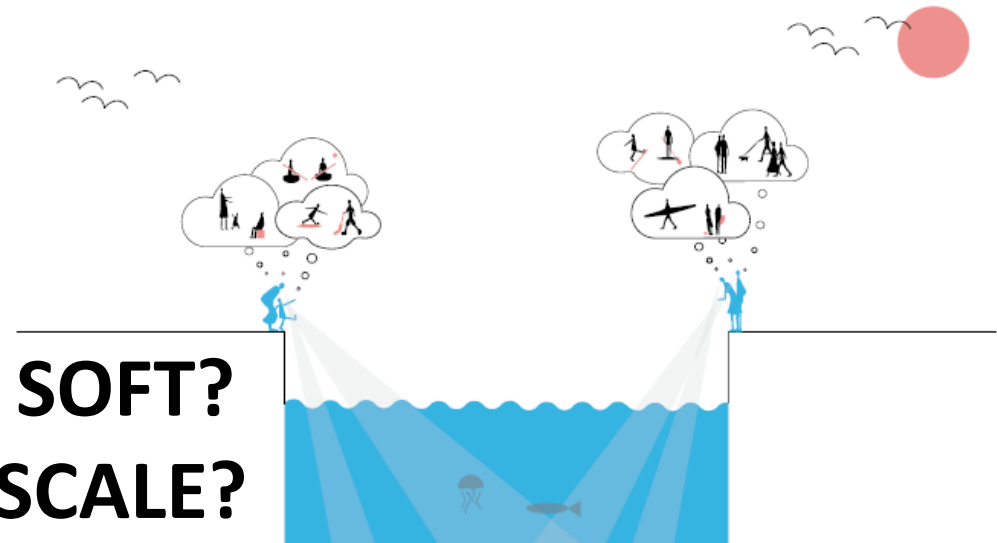
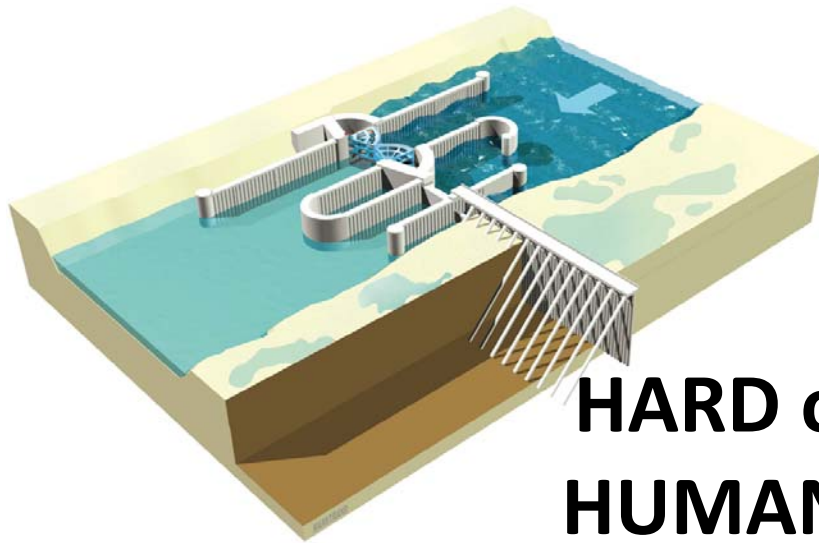
Storm water and rising sea Level



Lemvig Storm Water Wall



Future Storm Water projects



**HARD or SOFT?
HUMAN SCALE?
RECREATION AND
SPORT?**



URBANISATION

LOKALE
ANLÆGS
FONDEN

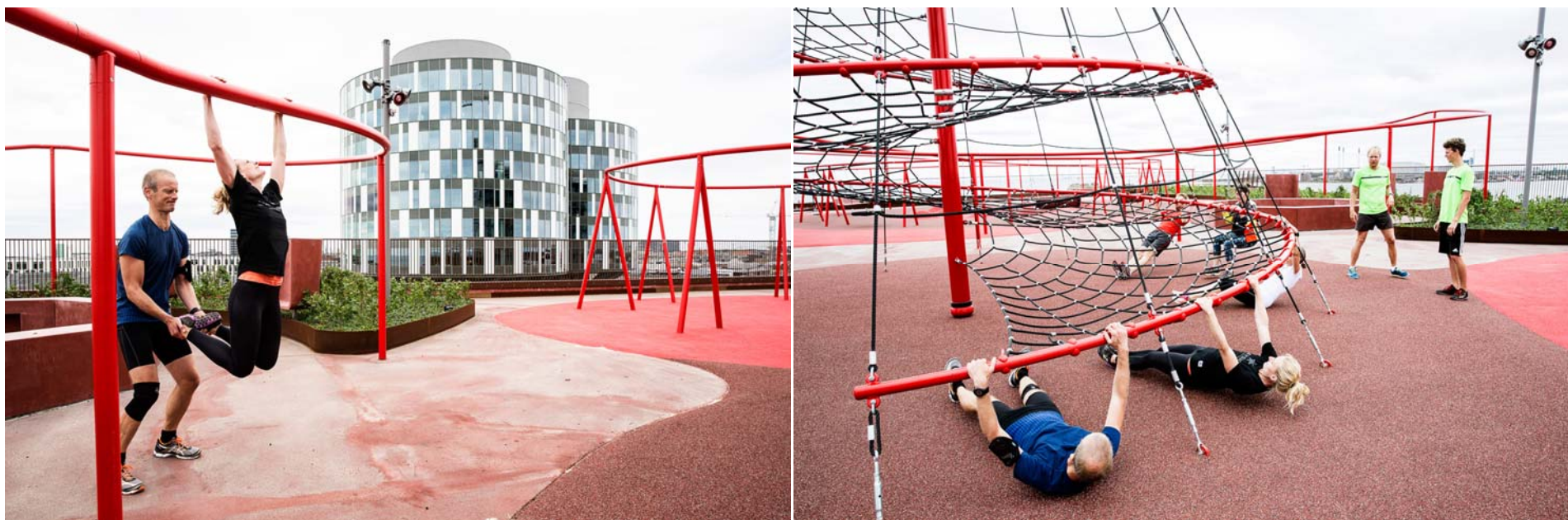
Active Roof Top "Lüders"



Active Roof Top "Lüders"



Active Roof Top "Lüders"



CopenHill –Incinerator



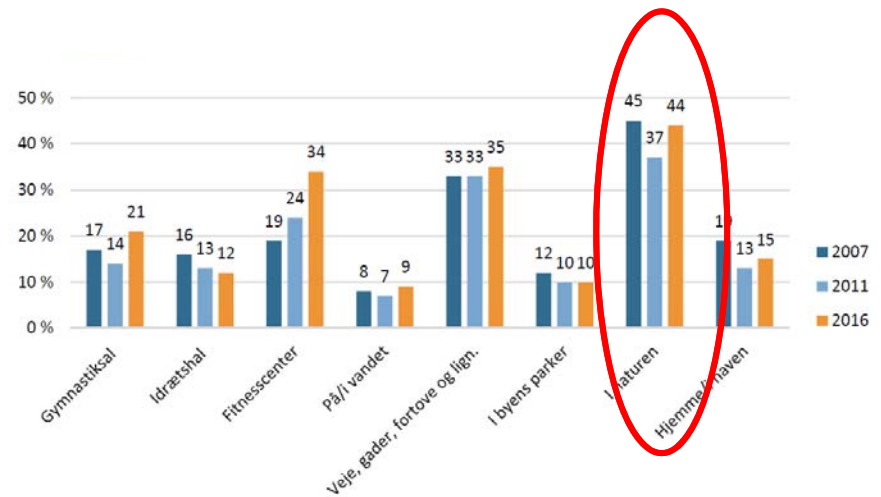
CopenHill – Artificial ski slope



CopenHill

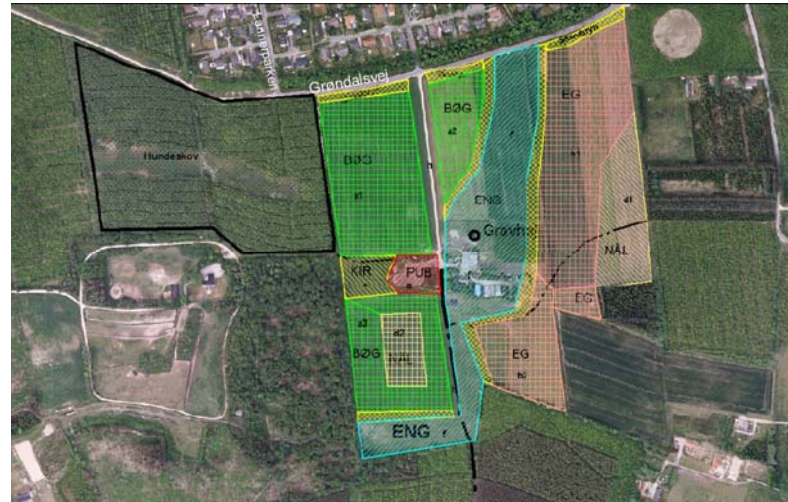


Protecting Drinking Water



www.idan.dk

Protecting Drinking Water AND build arena for outdoor sports



INNOVATION leading to new solutions

- Bing architects together with end-users and movement experts
- challenge+human
=new solution (Human scale)
- Double / tripple functionality
- Good luck

THANK YOU



IDAN
Sports Innovation Day
2017



www.loa-fonden.dk

Contact

Jakob Færch

Phone: +45 28 69 47 74

jf@loa-fonden.dk

LOKALE
ANLÆGS
FONDEN